



SHINING 3D

EinScan *Rigil*

The Tri-Mode Laser 3D scanner

Rapid · Refined · Reliable



- Wireless
- Built-In Computing
- Hybrid Light

The Tri-Mode Laser 3D Scanner

EinScan Rigil is the world's first Tri-Mode 3D scanner with built-in computing, wireless solution and hybrid light technology. EinScan Rigil offers a fully integrated 3D scanning wireless workflow with triple work modes that effectively eliminates the traditional compromise between computing power and flexibility.

It provides high quality models with $0.04 + 0.06$ mm/m volumetric accuracy and high geometric resolution up to 0.05 mm. Its hybrid types of light sources — 19+19 crossed laser lines, 7 parallel blue laser lines, and infrared VCSEL — which paired with two separate groups of tailored cameras to ensure versatile performance and peak efficiency for objects of wide-range of sizes and surface types.



Hybrid Light Source

19+19 *Crossed Laser Lines*

For high-speed scanning, deliveries top-tier efficiency and flexibility.

7 Parallel Laser Lines

For fine details, provides consistent results

Scan Data

Resolution up to **0.05 mm**

IR Rapid

VCSEL Infrared-powered scanning solution for high efficiency and wide coverage of medium to large objects, with eye safe portrait scanning.

Scan Data

Two Scanners In One

2 Groups of Cameras and Projectors

EinScan Rigel's 2 separate groups of cameras are specifically designed to capture different light sources, enables best adaptability to laser and IR light source respectively; to achieve better data recognition under strong environmental light, to ensure precise data captured even in complex lighting environments.



Scan Data



Reliable Volumetric Accuracy

Up to **0.04 + 0.06 mm/m**

Triple Work Modes

Unlock MAX Performance And Flexibility

The EinScan Rigil offers three operating modes:

Standalone Mode

No PC connection required, all scanning and processing tasks are completed directly on the hardware, delivering exceptional portability and ease of use.

Wireless PC Mode

Leveraging built-in Wi-Fi 6, this mode enables seamless wireless scanning and allows connection to a powerful computer, optimizing performance for complex tasks and large data volume.

Wired PC Mode

Maintaining availability and maximum scanning speed and data volume in complex network environments.



Superior adaptability to scan objects with dark and reflective metal surface without spray

Marker-Free Laser Scanning

EinScan Rigil has a special feature for tracking algorithm, provided by the marker-free blue laser scanning mode, that enhances a more efficient scanning process than traditional marker based laser scans as well as better data quality than marker-free IR scans.



Working Efficiently in Sunlight Outdoors

Both Blue Laser and Infrared VCSEL projectors have strong environment light adaptability, which ensure smooth scanning experience under strong sunlight.

5MP Full Color Texture Scanning

EinScan Rigil is equipped with a 5MP high-definition camera that can restore high-quality texture details, allowing designers, engineers and artists to maintain high-fidelity modeling and rendering during the digitization process, providing more precise information for subsequent analysis and creation.



For Prosumer, For Automotive

EinScan Rigil is designed to comprehensively address the 3D modeling needs of consumers in the automotive aftermarket industry.

It significantly enhances efficiency in generating high-quality 3D models, combining fast scanning capabilities, streamlined professional workflows, lightweight computing solutions, and rich data editing functions.



*The Screen Casting (Standalone Mode Only) feature seamlessly integrates into every stage of the workflow, enhancing team productivity through real-time collaboration.



All-In-One Powerful Hardware



32GB DDR5 RAM,
32GB eMMC+ 1TB SSD ROM



Built-in 2 x 6000mAh
Replaceable Batteries



6.4" 2K AMOLED
Touchscreen

EXScan Rigil

EXScan Rigil is a dedicated PC software designed specifically for the EinScan Rigil scanner, covering the full spectrum of advanced professional scanning workflows, scanning, data modification, closed surface generation, model editing, to export and sharing.

When paired with the EinScan Rigil scanner, it delivers a seamless, flexible, and portable scanning experience that combines stability and high-quality results.



High-Speed Scanning
and Processing Algorithms



Rich Editing Function
and User-Friendly Design



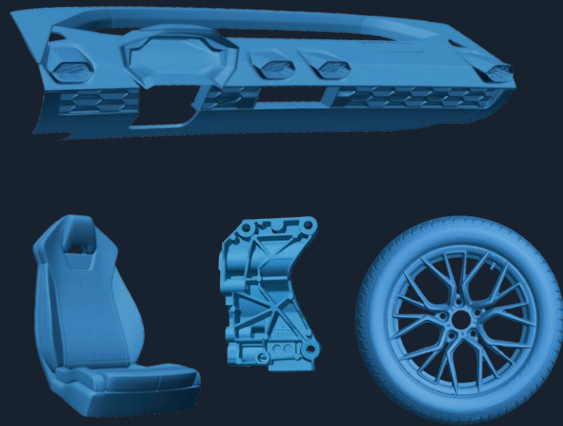
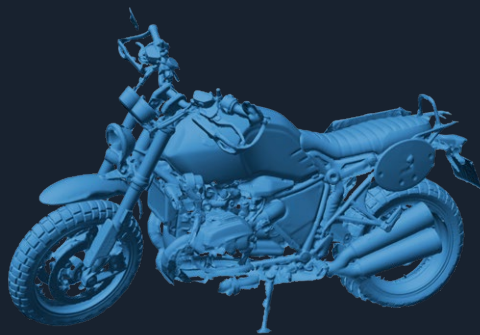
Professional
Modelling Workflow

- 3/6/12 mm Marker Supported
- Global Marker Alignment
- Auto Detecting Plane
- Dynamic Laser Switching
- Scan Rewind
- Auto Hole Filling
- Remove small Floating Parts
- Cutting Plane Tool
- Resume Edited Data Scanning
- Global Optimization
- X-Y-Z System Alignment
- Model Measurement



Applications

- Aftermarket & Engineering



- AR, VR & Digital Content



- Heritage Preservation & Art



- Education & Scientific Research



TECHNICAL SPECIFICATIONS

EinScan Rigil

| | | | |
|-----------------------------------|--|--|--|
| Work Mode | | Wireless Standalone For extra computing resource: PC- Wireless / PC-Wired | |
| Scan Mode | Laser HD | | IR Rapid |
| Light Source | 19+19 crossed laser lines | 7 blue laser parallel lines | IR VCSEL |
| Resolution | 0.05 ~ 10 mm | | 0.2 ~ 10 mm |
| Scanning Speed | 4,400,000 points/s | 940,000 points/s | 1,600,000 points/s |
| Working Distance | 170 ~ 550 mm | | 160 ~ 1500 mm |
| Alignment Mode | Global Markers / Markers / Features / Hybrid | | Global Markers / Markers / Features / Texture / Hybrid |
| Volumetric Accuracy | Up to 0.04 + 0.06 mm/ m | | Up to 0.1 + 0.3 mm/m |
| Camera Resolution | 3D: 2.3MP*2 1.3MP*2; Texture: 5MP | | |
| Output Formats | STL, OBJ, PLY, 3MF, ASC | | |
| Laser Class | Class II | | / |
| Hardware | CPU: 8 core, 2.4GHz; Hard Drive: 1T SSD ROM; 32GB DDR5 RAM; 6.4"2K AMOLED Touch Screen | | |
| Operation Conditions | Temperature -10°C ~ 40°C | | |
| Certifications | CE, FCC, ROHS, WEEE, FDA, SRRC, IP50 | | |
| Recommended Configurations for PC | Win10/11, 64 bit; Graphics card: NVIDIA GTX1060; Video memory: ≥6GB; Processor: I7- 11800H; Memory: ≥32GB | | |
| Interface & Power Source | USB Type-C Battery: 6000mAh*2; Support 60W-PD3.0 Charger | | |
| Dimension | (H*D*W) 233 × 180 × 72.8 mm | | |
| Net Weight | 870 g (batteries included) | | |



SHINING 3D

Follow us on



Facebook



Instagram



LinkedIn



YouTube



EinScan Expert

SHINING 3D Tech Co., Ltd.

- Hangzhou, China
P: 400-0799-666
No. 1398, Xiangbin Road, Wenyan,
Xiaoshan, Hangzhou, Zhejiang,
China, 311258

SHINING 3D (HK) COMPANY LIMITED.

- Hong Kong, China
P: 00852-23348468/23348568
Room 303A, 3/F, Tower 2, Enterprise Square Phase 1,9
Sheung Yue Road, Kowloon Bay, Kowloon, Hong Kong

SHINING 3D Technology GmbH.

- Stuttgart, Germany
P: +49-711-28444089
Breitwiesenstraße 28, 70565, Stuttgart, Germany
- Barcelona, Spain
Calle 27, 10-16, Sector BZ, 08040 Barcelona, Spain

SHINING 3D Technology Inc.

- California, USA
P: +1415-259-4787
2450 Alvarado St, Unit 7, San Leandro, CA 94577
- Florida, USA
2807 W Busch Blvd, Suite 200, Tampa, FL 33618

SHINING 3D Technology Japan Inc.

- Tokyo, Japan
Tradepia Odaiba, 2-3-1 Daiba, Minato-ku, Tokyo